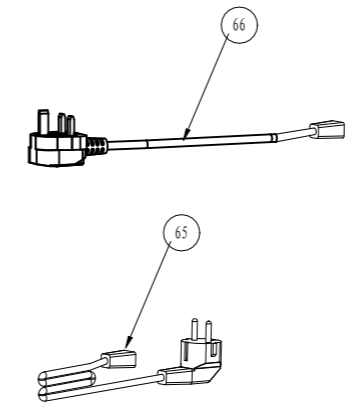
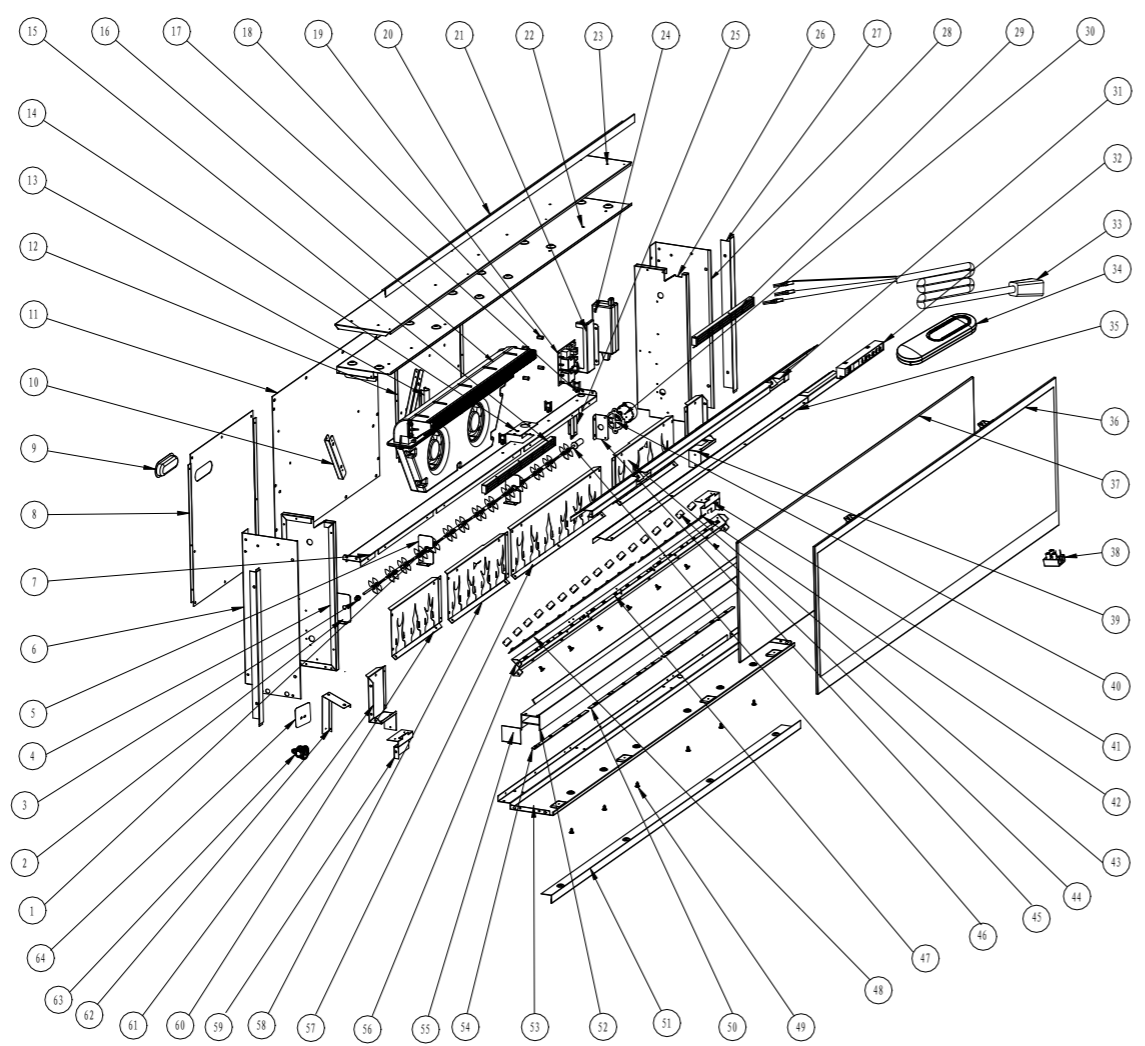
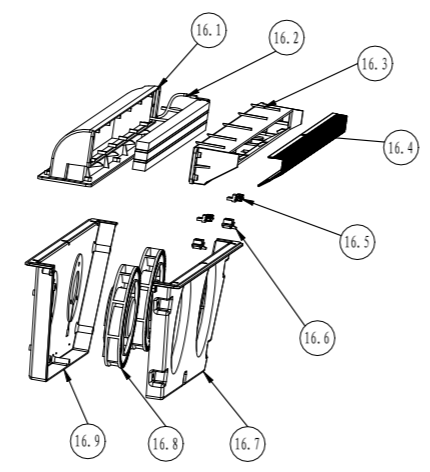
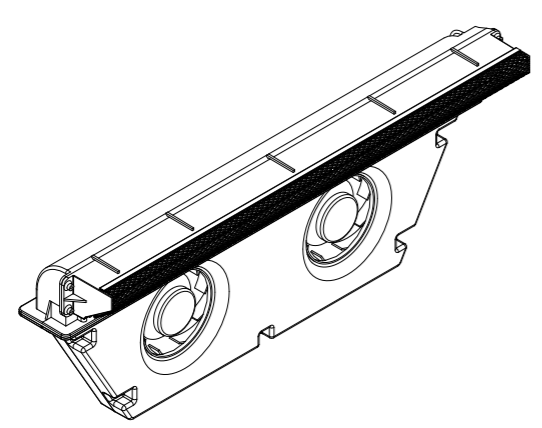
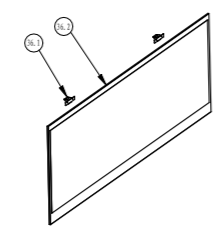
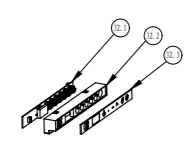


LET标记	ECN文件修改号	BY修改人	DATE日期	REVISION 修改记录



43	05.03.032.010	火焰板 (右1)	Flame panel(right 1)	1
42	03.18.004.075	LED灯条 (6灯)	LED strip	2
41	05.03.005.398	幕玻右固定支架	right holder for mirror	1
40	02.02.002.003	同步电机防震垫片	rubber gasket	1
39	05.03.005.396	幕玻右支架	Rightbracket for mirror	1
38	03.10.004.002	PA12白色接线柱	terminal block	0.25
37	04.01.001.170	幕玻	mirror	1
36.2	04.02.001.156	面玻	front glass	1
36.1	05.03.005.406	面玻固定支架	bracket for front glass	2
36	04.06.001.114	面玻组件	Surface glass components	1
35	05.03.023.061	幕玻上挡板	top holder for mirror 1	1
34	03.09.001.034	遥控器	The remote control	1
33	03.21.004.019	电源线	power cord	1
32.3	04.02.001.154	控制面板	touch panel	1
32.2	02.01.046.030	开关盒	display board holder	1
32.1	03.08.006.044	显示板	Display board	1
32	06.07.002.094	显示板组件	Display panel assembly	1
31	05.03.020.121	幕玻上横档	top holder mirror2	1
30	03.01.001.129	同步电机	flicker motor	1
29	05.03.028.009	右进风板	Right grill	1
28	05.03.015.127	右外侧板	right side panel	1
27	05.03.021.072	面框左右直挡	left right trim	2
26	05.03.015.125	右内侧板	right inner side panel	1
25	05.03.005.407	同步电机固定支架	bracket for flicker motor	1
24	03.20.002.038	ETL六级5A适配器	power supply	1
23	05.03.003.119	顶板	top panel	1
22	05.03.003.118	内顶板	inner top panel	1
21	05.03.005.408	适配器支架	bracket for power supply	1
20	05.03.020.123	面框上横档	Top trim	1
19	03.08.002.128	主控板	control board	1
18	02.01.009.003	六角隔离柱	standby	4
17	02.01.008.001	方形线卡	clip(square)	6
16.9	02.01.046.031	风机箱后盖	rear blower cover	1
16.8	06.02.001.061	离心风机	blower	2
16.7	02.01.046.032	风机箱前盖	front blower cover	1
16.6	02.01.038.015	热保固定支架	cutout bracket	2
16.5	03.07.007.001	热保	cutout	2
16.4	05.04.028.023	出风口网罩总成	air outlet grill assembly	1
16.3	02.01.048.038	出风口	air outlet grill	1
16.2	06.03.001.069	PTC发热体	heating element	1
16.1	02.01.048.039	出风口连接件	air outlet grill holder	1
16	06.02.001.107	风机发热体组件	element assembly	1
15	05.03.028.014	左进风板	left air grill	1
14	05.03.017.025	进线板	cord set	1
13	05.03.099.020	进线管道	cord tubd	1
12	05.03.031.061	后盖板 (右)	Back panel(right)	1
11	05.03.031.084	后盖板 (中)	Back panel (middle)	1
10	05.03.005.404	风机箱固定支架	blower assembly holder	2
9	02.01.003.006	控手	handle	2
8	05.03.031.062	后盖板 (左)	Back panel (left)	1
7	05.03.006.147	火焰板固定板	Flame panel holder	1
6	05.03.015.126	左外侧板	left side panel	1
5	05.03.005.403	反光轮支架 (2)	bracket for rotisseries	3
4	05.03.015.124	左内侧板	Left inner side panel	1
3	02.01.007.001	反光轮轴套	connector for rotisserie	1
2	05.03.005.402	反光轮支架 (1)	bracket for rotisseries	1
1	02.01.016.006	Ø9护线圈	Ø9 rubberg rommets	2
ITEM 序号	Part No. 零件图号	Description 零件名称	Description 英文名称	QTY 数量



66	03.21.004.021	电源线	power cord	1
65	03.21.002.024	电源线	power cord	1
64	02.01.008.006	接线柱绝缘板	isolation sheet	1
63	02.01.008.006	5N-4线卡	5 n - 4 strain relief	1
62	05.03.005.422	NTC支架	NTC bracket	1
61	05.03.005.395	幕玻左支架	left bracket for mirror	1
60	05.03.032.021	火焰板	Flame panel	1
59	05.03.005.397	幕玻左固定支架	left holder for mirror	1
58	05.03.032.009	火焰板 (左1)	Flame panel (left 1)	1
57	05.03.032.008	火焰板 (中)	Flame panel (middle)	1
56	05.03.005.517	LED灯支架	LED bracket	1
55	05.03.005.405	炭床左右支架	bracket for fuel bed	2
54	03.18.004.074	RGB灯条 (4灯)	RGB strip	1
53	03.18.001.220	底板	base panel	1
52	06.04.007.004	透明炭床组	fuel beol	1
51	05.03.020.122	面框下横档	Bottom trim	1
50	03.18.004.073	RGB灯条 (5灯)	RGB strip	4
49	02.01.009.001	BLF50开关固定销	pin	24
48	03.18.004.038	LED灯条 (5灯)	LED strip	1
47	03.18.004.072	RGB灯条 (6灯)	RGB strip	2
46	06.10.001.020	反光轮组	Rofisseries assembly	1
45	05.03.005.401	同步电机支架	bracket for flicker motor	1
44	02.01.027.013	LED灯罩	LED cover	17
ITEM 序号	Part No. 零件图号	Description 零件名称	Description 英文名称	QTY 数量

MATERIAL 材料	浙江富迓佳电子科技有限公司		
THICK 料厚	ZHEJIANG FUERJ ELECTRIC SCIENCE & TECHNOLOGY CO., LTD.		
DRAWN 设计	王兵2021/11/13	XLF60-EU	
CHECKED 审核	PROCEED FROM 初始使用产品	Part Name 零件名称	爆炸图
APPROVED 审批	APPROVED 审批	REV. 版本号	00
SIGN 签字/DATE 日期		Drawing No. 图号	1 SHEET/OF 1
Scale 比例	N. W. 重量		