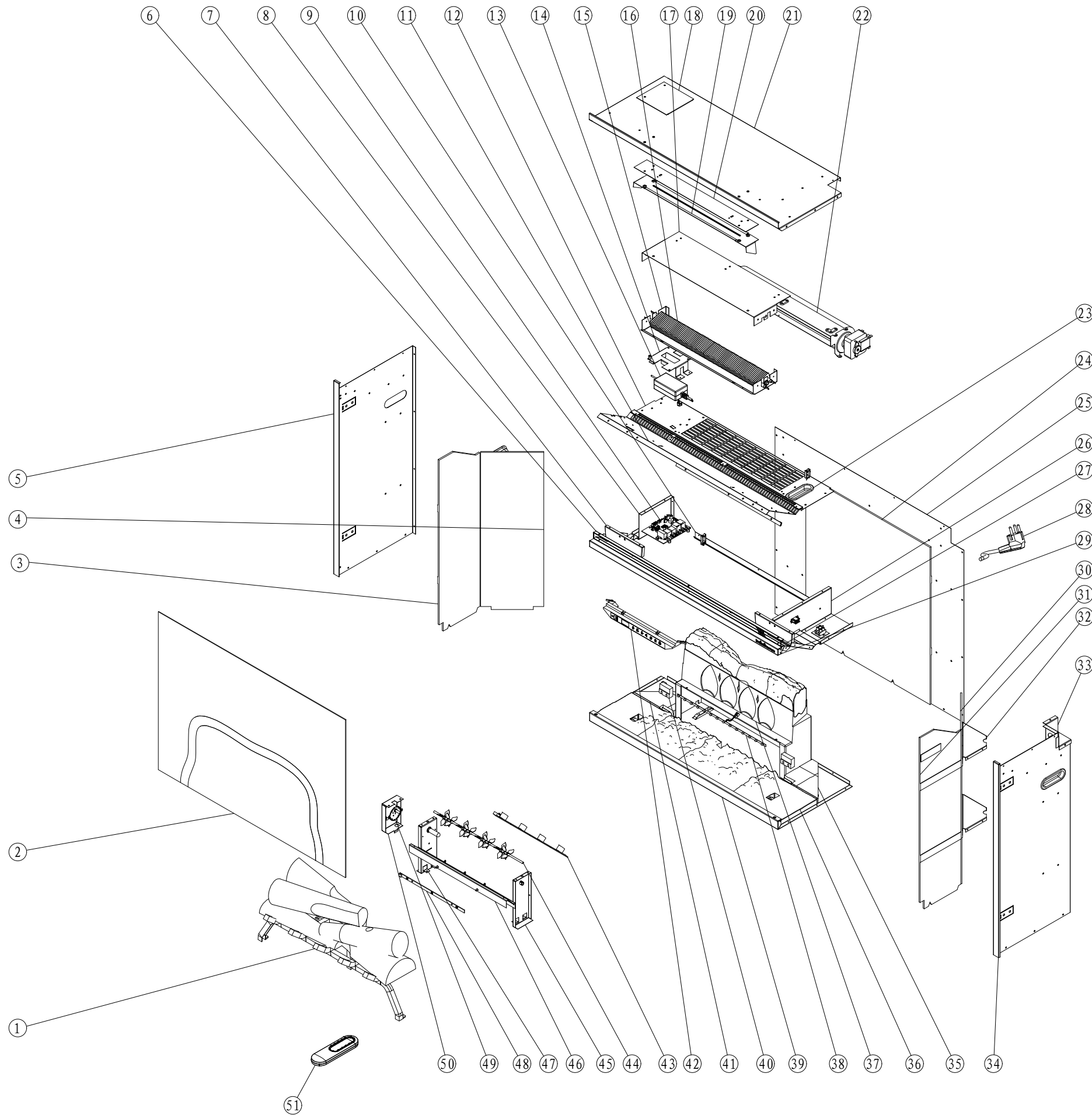


LET标记	ECN文件修改号	BY修改人	DATE日期	REVISION 修改记录
①		陈森科	20190104	Add remote control



ITEM 序号	Part No. 零件图号	Description 英文名称	Description 零件名称	QTY 数量
51	03.09.001.033	remote control	RBF30遥控器	1
50	05.03.026.041	flicker motor cover	RBF30同步电机保护罩	1
49	03.01.001.112	flicker motor	RBF30-EU同步电机	1
48	03.18.004.034	RGB strip	RBF30火焰RGB灯条	1
47	05.03.005.449	left bracket of flicker motor	RBF30反光轮左支架	1
46	05.03.005.451	LED strip bracket	RBF30 LED支架	1
45	05.03.005.450	right bracket of flicker motor	RBF30反光轮右支架	1
44	06.10.001.012	rotisserie assy	RBF30反光轮组件	1
43	03.18.004.027	4*1W LED strip	RLG25 4灯条	1
42	06.11.001.005	Touch screen assy	RBF30-EU触摸屏组件	1
41	02.05.002.003	LH corner, brick	RBF30底碳左填充块	1
40	02.02.002.023	mirror holder	RBF30幕玻底托	2
39	05.03.001.165	base board	RBF30底板	1
38	03.18.004.035	LED strip	RBF30底碳LED灯	1
37	06.04.002.025	back LOG assy	RBF30火焰碳组	1
36	06.04.002.037	ember bed	RBF30-EU底碳	1
35	02.05.002.004	RH corner, brick	RBF30底碳右填充块	1
34	05.04.009.038	right panel assy	RBF30右侧板组	1
33	05.03.047.012	bracket for strain relief	RBF30-EU线卡固定盒	1
32	05.03.005.446	brick panel bracket	RBF30三角支架	4
31	02.01.039.032	RH side brick panel	RBF30-EU右墙砖	1
30	02.01.039.035	RH Corner brick panel	RBF30-EU右侧墙砖	1
29	05.03.020.108	bottom beam of outlet	RBF30出风口下横梁	1
28	03.21.002.014	EU power cord	RBF30-EU欧式电源线	1
27	05.03.060.050	top board	RBF30上盖板	1
26	05.03.005.445	right bracket for blower panel	RBF30风轮板右支架	1
25	05.03.042.015	back panel	RBF30后背板	1
24	02.01.039.034	back brick panel	RBF30-EU背墙砖	1
23	02.01.003.006	plastic handle	XLF50挖手	3
22	07.03.001.016	blower motor	RBF30-EU风轮	1
21	05.03.003.101	top panel	RBF30顶板	1
20	02.01.024.045	Mica sheet	RBF30云母隔热片	1
19	05.03.005.448	Heat shield bracket	RBF30隔热板支架	1
18	05.03.060.051	cover plate on top panel	RBF30顶板上盖板	1
17	05.03.060.048	blower top bracket	RBF30风轮上盖板	1
16	06.03.001.071	Heating	RBF30-EU发热体	1
15	05.03.060.049	blower holder	RBF30风轮下盖板	1
14	05.03.026.042	power supply cover	RBF30适配器保护罩	1
13	03.20.002.047	ETL power supply	ETL六级1.5A适配器	1
12	05.03.006.135	blower fixed panel	RBF30风轮固定板	1
11	05.04.029.009	inner top panel	RBF30内顶板组	1
10	05.03.025.038	blower panel holder	RBF30风轮固定板挂钩	1
9	03.08.002.070	PC board	RBF30EU-ECO主控板	1
8	05.03.005.444	left bracket for blower panel	RBF30风轮板左支架	1
7	05.03.005.452	top panel bracket	RBF30顶板支架	2
6	05.03.030.036	outlet assy	RBF30出风口总成	1
5	05.04.009.037	left panel assy	RBF30左侧板组	1
4	02.01.039.033	LH Corner brick panel	RBF30-EU左侧墙砖	1
3	02.01.039.031	LH side brick panel	RBF30-EU左墙砖	1
2	04.01.001.155	mirror	RBF30幕玻	1
1	06.04.003.230	LOG SET	RBF30柴火架组件	1
MATERIAL 材料	浙江富迺佳电子科技有限公司 ZHEJIANG FUERJ ELECTRIC SCIENCE & TECHNOLOGY CO., LTD.			
THICK 料厚				
DRAWN 设计	陈森科20180813			
CHECKED 审核				
APPROVED 审批				
SIGN签字/DATE日期		PROCEED FROM 初始使用产品	RBF30-EU	
		Part Name 零件名称	爆炸图	REV. 版本号
				01
Scale 比例	N. W. 重量	Drawing No. 图号	210357	1 SHEET/OF 1